



NACECARE
S O L U T I O N S
Clarity in Cleaning

NR1520
OWNERS MANUAL



ATTENTION! DO NOT USE THE MACHINE WITHOUT HAVING READ THE INSTRUCTIONS CAREFULLY

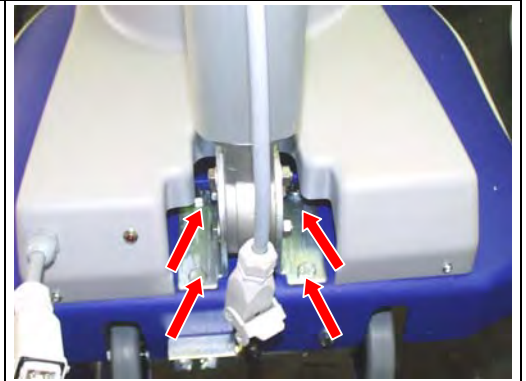
NaceCare Solutions
1205 Britannia rd E.
Mississauga, ON, Canada
L4W 1C7
Tel: 1 800 387 3210
Fax: 1 800 709 2896

Visit us on the web: www.nacecare.com

ASSEMBLY INSTRUCTIONS

ASSEMBLY OF HANDLE (NR1520)

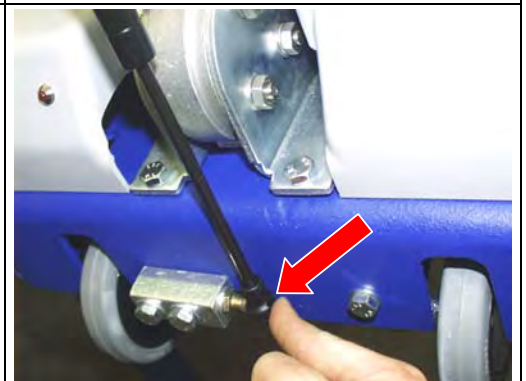
Put the handle in vertical position, place its support on the four holes and insert all the four bolts (M8).



Tighten the bolts one at the time, using a wrench to hold the lock nuts in place.

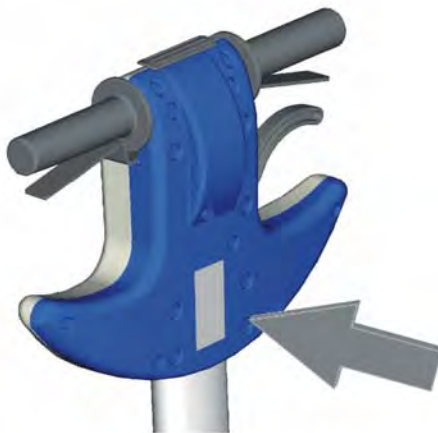


Connect the shock to the support. Connect the handle cable with the motor cable.



SUMMARY

SUMMARY	3
UPON DELIVERY OF THE MACHINE	4
TECHNICAL DATA	5
MACHINE PREPARATION	6
ABRASIVE PAD DRIVER ASSEMBLY	6
MACHINE PREPARATION	7
GENERAL SAFETY RULES	8
WORK	9
PREPARATION MANOEUVRE OF THE MACHINE	9
PREPARATION:MANOEUVERING THE MACHINE	9
MANOEUVRING THE MACHINE	9
UPON COMPLETION OF WORK	10
DAILY MAINTENANCE	10
TROUBLE SHOOTING GUIDE	11
THE MACHINE DOES NOT CLEAN EFFICIENTLY (IT FLUTTERS OR SWINGS)	11
THE MACHINE STOPS WHILE WORKING	11
CARBON BRUSH WEAR INDICATOR	11



Upon delivery of the machine

When the machine is received, ensure to check that all components are in the box and that the machine has not been damaged in transport.

This machine has been designed for use on hard floors. Any use of the machine, other than the recommended use is dangerous and could cause injury to the operator.

The machine is suitable for the use of all sites, i.e. hotels, schools hospitals, factories, shops, offices, residences.

The machine can work efficiently, only by using it correctly and by maintaining it properly.

In this manual you will find all of the information necessary to use the machine in the safe and proper ways.

Please read these instructions carefully.

Warning: the machine can operate only with the voltage + or- 5% of the value shown on the plate. The plate is indicated by the arrow on the left hand side of this page.

TECHNICAL DATA

	Unit	NR1520
Washing width	INCH	21.25"
Machine length	INCH	24"
Machine height (motor)	INCH	11.8"
Machine height (handle)	INCH	50"
Rounds Per Minute	Rpm	1500
Voltage	V	115
Motor power	W	1100
Frequency	Hz	60
Weight	LBS	80
Cable length	FT	50
Ø wheels	INCH	4"

MACHINE PREPARATION

PREPARING THE MACHINE FOR FIRST USE

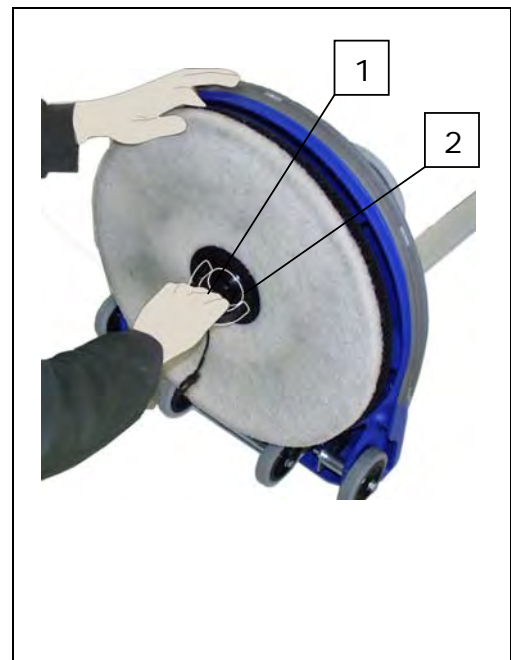
Upon delivery of the machine, please ensure that the owner's manual is read thoroughly. If there is multiple users for the machine, ensure that they have a full understanding of how to use the machine in a safe manner.

ABRASIVE PAD DRIVER ASSEMBLY

WARNING:

When installing the pad driver/brush by hand, ensure that the power source is disconnected. Installing the pad driver/brush with the machine plugged in could cause serious injury.

Lay the machine on the floor so it is resting on the handle. With the appropriate handle (1) unscrew (counter clockwise rotation) the lock nut (2), install the abrasive pad on the flange. With one hand hold the pad, with the other hand screw the lock nut back on to the machine (clockwise rotation). Return the machine back to it's upright position.



By pulling the lever (A), drop the handle till the operator's arms are slightly bent. With your thumb push the safety switch down (B). Pull the motor lever (C) to turn the motor on.

Note:

When the handle is in the upright position, the machine can not run. There is an internal safety switch to prevent the machine from running in this position.

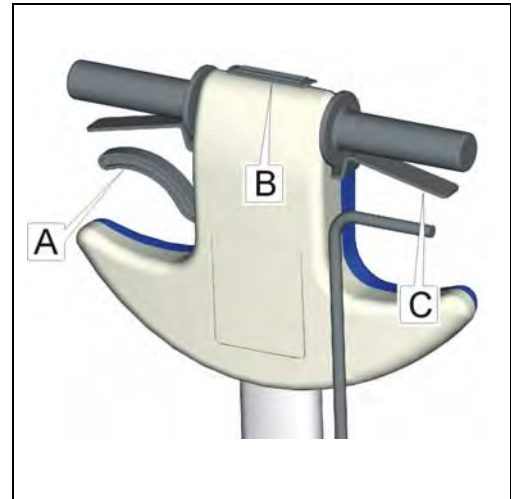


MACHINE PREPARATION

WARNING:

Use only high-speed pads.

Using any other pads other than ones recommended for high speed could be dangerous and cause bodily harm or damage to the floor.



GENERAL SAFETY RULES

Any use of the machine other than the specified uses different from the instructions written here or recommended by NaceCare Solutions is prohibited and could cause bodily harm.

Do not remove or replace the specification plates on the machine for any reason.

Before operating the machine or performing maintenance, READ THESE INSTRUCTIONS CAREFULLY.

The use of the machine in closed surroundings is subordinated to rules effective in your country.

- Do not use the machine for applications other than the specified ones.
- Do not use the machine to collect acids or toxic materials.
- Ensure that work surfaces, slabs, ramps can handle the weight of the machine.
- While working, keep a suitable distance from people at work in the same area.
- Do not put your hands in the machine while it is operating.
- Do not operate the machine with loose clothing, which can get tangled in the disk.
- While using the machine, ensure that there is no pieces of rope, cables or other loose debris which could get tangled in the brush and harm the machine.
- Use only the brushes delivered with the machine or those recommended by NaceCare Solutions.
- The use of different brushes is unsafe and could cause bodily harm or serious injury.
- The machine must be used by authorized personell trained on these safety rules.
- The power socket must have a ground connection
- Avoid the power cable while using the machine
- If you notice that the power cable is damaged, stop using the machine immediately and have the cable replaced by an authorized NaceCare Solutions service centre.
- Do not mix chemicals of different brands.
- The machine can be stored in temperatures between -25°C and +55°C.
- The optimum working temperature of the machine are between 0°C and 40°C.
- Humidity % must be within the values 30 to 95%.
- Do not use the machine in explosive atmosphere or in presence of powders or flammable liquids.
- Do not use acid solutions, which could damage the machine.
- The chemical solution must not exceed the temperature of 50°C and each chemical must be used in the concentration recommended by the manufacturer.
- Avoid keeping the machine in one spot of the floor. This could damage the floor.
- In case of fire, use powder extinguisher. **Do not use water**
- Do not bump into shelving or scaffoldings with the machie.
- When using this machine, the area of use should be blocked off and have signs indicating that the floor is wet.
- If you experience problems with this machine, bring it to the closest service centre. ONLY a NaceCare Solutions service centre is authorized to perform repairs on this machine.
- ONLY original spare parts may be used for the repair of this machine.
- During regular maintenance of this machine, ensure the power source is disconnected and the proper safety precautions are met.
- Do not wash the machine with a power washer or hose. Use a damp rag to wipe down the machine.
- Do not disconnect the power source while the machine is operating.

WORK

PREPARATION MANOEUVRE OF THE MACHINE

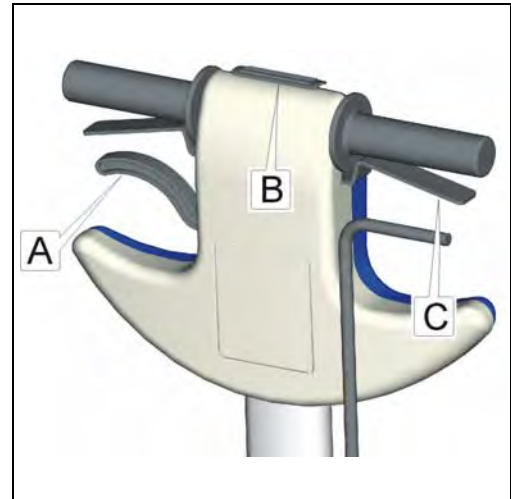
PREPARATION: MANOEUVERING THE MACHINE

By pulling the lever (A) lower the handle until the arms of the user are lightly bent.

Using your thumb, push down on the safety lever (B) and then engage the motor with the two levers (C).

The safety lever (A) must be pressed down every time before starting.

For safety reasons, the motor cannot be operated when the handle is in the upright position.



MANOEUVRING THE MACHINE

Every time the operator uses the machine he/she must be confident with the movements of the machine. Do not go near other people or obstacles. Always Keep the power cable behind the operator. Be careful not to work with the machine near the power cable.

Don not use the machine on the same area for prolonged periods of time, doing this could damage the floor. During use, use forward and backward movements.

Do not use the machine in the same area for extended periods of time. Doing this could damage the floor.

UPON COMPLETION OF WORK

DISASSEMBLY OF BRUSH/PAD DRIVER

To remove the abrasive pad, Lay the machine on the floor so it is resting on the handle. With the appropriate handle unscrew (counter clockwise rotation) the lock nut, Remove the abrasive pad from the flange. Insert the lock nut after the pad is removed. Return the machine back to it's upright position.

During storage, the machine must never rest on the pad. The machine weight could permanently damage it.



WARNING:

DISCONNECT POWER SOURCE BEFORE PERFORMING MAINTENANCE ON THE MACHINE

DAILY MAINTENANCE

Before storing the machine:

- Examine the power cable for any damage.
- clean the machine with a damp cloth.
- Inspect the pad to determine if it needs to be replaced.

TROUBLE SHOOTING GUIDE

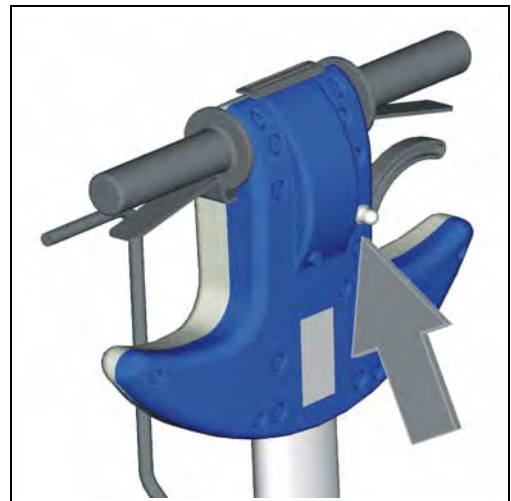
THE MACHINE DOES NOT CLEAN EFFICIENTLY (IT FLUTTERS OR SWINGS)

If the machine has been stored in the upright position with the pad on it, the pad may have been deformed by the weight of the machine. Replace the pad/brush to correct this problem.

THE MACHINE STOPS WHILE WORKING

Check that the circuit breaker on the rear of the handle has not tripped.

If the circuit breaker trips repeatedly, contact you nearest NaceCare Solutions service centre.



CARBON BRUSH WEAR INDICATOR

The machine is equipped with a sensor for the Carbon-brushes. When the red light is illuminated (see "drawing") the carbon brushes need to be replaced. ONLY AUTHORIZED NaceCare Solutions SERVICE CENTRES MAY PERFORM SERVICE ON THESE MACHINES.

